

Massima forza, tenuta stelo - Maximum force, rod seal - Maximale Kraft, Kolbenstange dichtung
 Forces maximale, joint de tige - Máxima fuerza, estanqueidad vástago - Força máxima, estanquidade na haste

SEALING	ROD SEAL
DESIGN	BOTTOM BASE - BODY DESIGN

1	Retaining ring	5	Valve	9	Back-up ring
2	Dual ring seal	6	Body	10	Rod wiper
3	Bottom base	7	Guide ring	11	Rod (nitrited superfinished)
4	Plug	8	Rod seal	12	Groove for secondary wiper

RANGE CHART

Model	Rev. Self contained	Body Ø		Stroke Cu		Initial force F0						
		mm	inch	mm	inch	daN	lb	OSAS	USAS	OPAS	SKUDO	SW
KM 3	.5	25	0.98	10 - 80	0.39 - 3.15	310	697	✓	✓	-	-	✓
KM 5	.5	32	1.26	10 - 80	0.39 - 3.15	510	1147	✓	✓	-	-	✓
KM 10	.5	38	1.50	10 - 80	0.39 - 3.15	980	2203	✓	✓	✓	-	✓
KM 10 C	.5	38	1.50	10 - 80	0.39 - 3.15	980	2203	✓	✓	✓	-	✓
KM 18	.5	50	1.97	15 - 80	0.59 - 3.15	1925	4327	✓	✓	✓	-	✓
KM 18 C	.5	50	1.97	15 - 80	0.59 - 3.15	1925	4327	✓	✓	✓	-	✓
KM 30	.5	63	2.48	15 - 80	0.59 - 3.15	3180	7149	✓	✓	✓	-	✓
KM 30 C	.5	63	2.48	15 - 80	0.59 - 3.15	3180	7149	✓	✓	✓	-	✓
KM 47	.5	75	2.95	15 - 80	0.59 - 3.15	4925	11701	✓	✓	✓	-	✓
KM 47 C	.5	75	2.95	15 - 80	0.59 - 3.15	4925	11701	✓	✓	✓	-	✓
KM 75	.5	95	3.74	15 - 80	0.59 - 3.15	7700	17310	✓	✓	✓	-	✓
KM 75 C	.5	95	3.74	15 - 80	0.59 - 3.15	7700	17310	✓	✓	✓	-	✓
KM 120	.5	120	4.72	15 - 80	0.59 - 3.15	12720	28595	✓	✓	✓	-	✓
KM 120 C	.5	120	4.72	15 - 80	0.59 - 3.15	12720	28595	✓	✓	✓	-	✓

✓ Built-in as standard

✓ Optional upon request

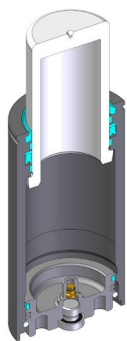
HOW TO ORDER

Series _____ Revision code _____

Model **KM 18-50.5-E-W**

Stroke _____ Version _____

Available versions

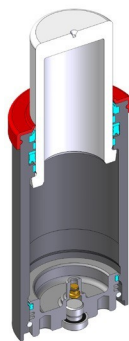


KM 18-50.5

Standard code



Self contained



KM 18-50.5-W

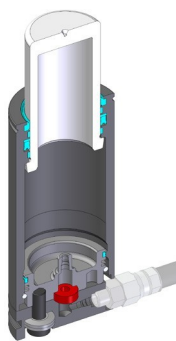
Add "-W" to standard code



Self contained



+
Secondary wiper

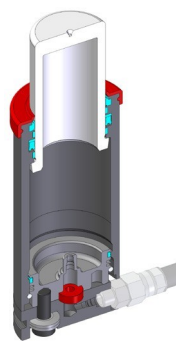


KM 18-50.5-C

Add "-C" to standard code



Linkable



KM 18-50.5-C-W

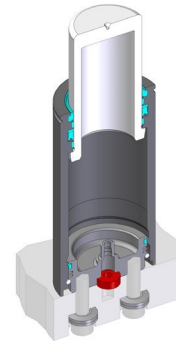
Add "-C-W" to standard code



Linkable



+
Secondary wiper

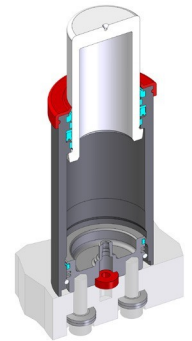


KM 18-50.5-E

Add "-E" to standard code



Easy Manifold



KM 18-50.5-E-W

Add "-E-W" to standard code



Easy Manifold



+
Secondary wiper