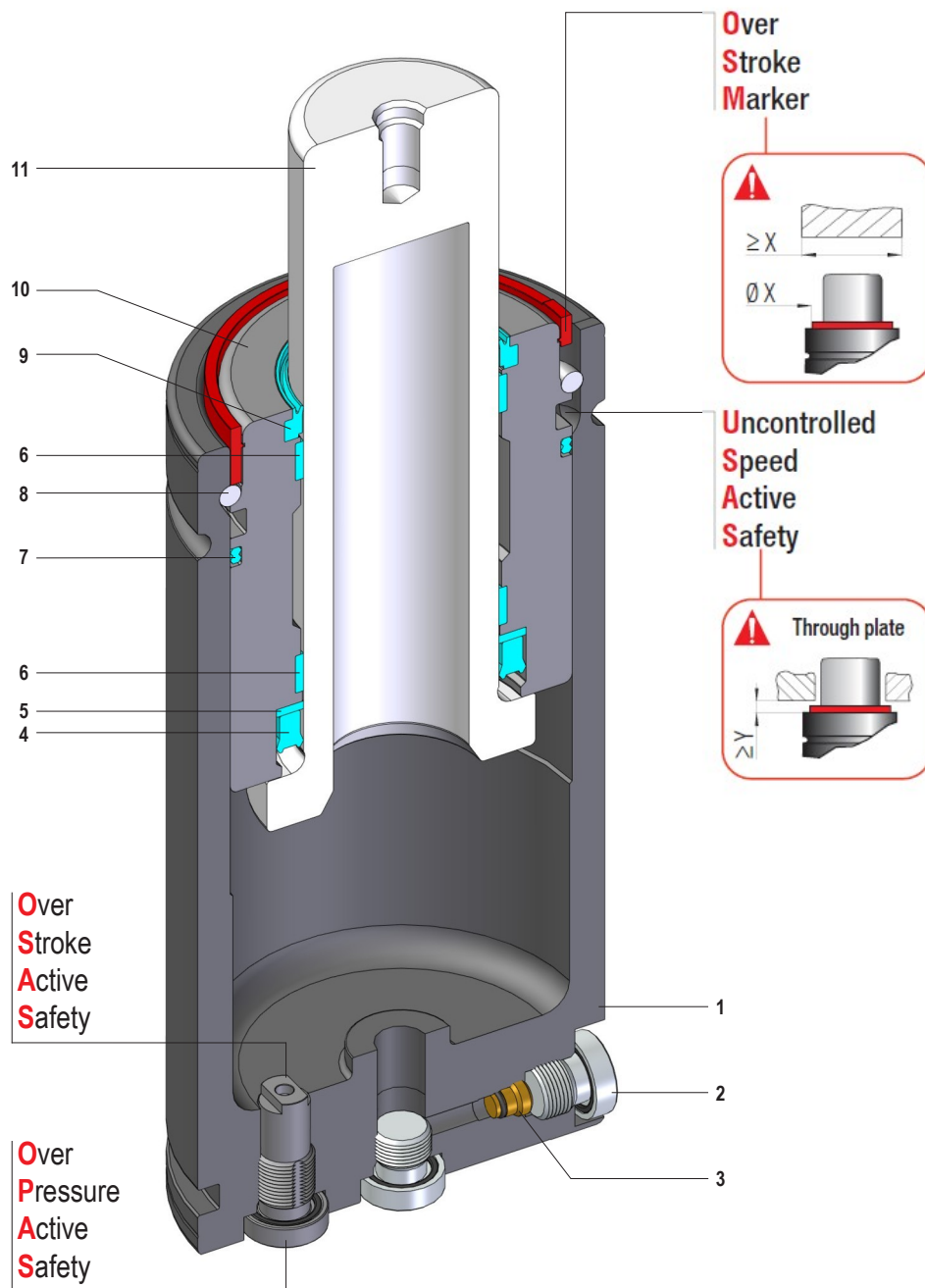


ISO	VDI	BMW	FCA
Ford	Mazda	MB	Nissan
PSA	Renault	Suzuki	VW



ISO 11901 standard - ISO 11901 standard - ISO 11901 standard
 Conforme ISO 11901 - ISO 11901 standard - Norma ISO 11901

SEALING	ROD SEAL
DESIGN	BUSH - BODY DESIGN

1	Body	5	Back-up ring	9	Rod wiper
2	Plug	6	Guide ring	10	Bush
3	Valve	7	Dual ring seal	11	Rod (nitrited superfinished)
4	Rod seal	8	Retaining ring		

RANGE CHART

Model	Rev.	Body Ø		Stroke Cu		Initial force F0						
		Self contained	mm	inch	mm	inch	daN	lb	OSAS	USAS	OPAS	SKUDO
AR 1,5	.6	32	1.26	10 - 125	0.39 - 4.92	170	382	✓	✓	✓	-	✓
AR 2	.2	32	1.26	10 - 125	0.39 - 4.92	170	382	✓	✓	✓	-	✓
AR 2,5	.6	38	1.50	10 - 125	0.39 - 4.92	260	585	✓	✓	✓	-	✓
ARF 2,5	.6	M 38 X 1,5		10 - 125	0.39 - 4.92	260	585	✓	✓	✓	-	✓
AR 5	.6	45	1.77	10 - 200	0.39 - 6.30	470	1057	✓	✓	✓	-	✓
AR 7,5	.6	50	1.97	13 - 300	0.51 - 11.81	740	1664	✓	✓	✓	-	✓
AR 15	.6	75	2.95	13 - 300	0.51 - 11.81	1530	3440	✓	✓	✓	-	✓
AR 30	.6	95	3.74	13 - 300	0.51 - 11.81	2945	6621	✓	✓	✓	-	✓
AR 50	.6	120	4.72	25 - 300	0.98 - 11.81	4980	11195	✓	✓	✓	-	✓
AR 75	.6	150	5.91	25 - 300	0.98 - 11.81	7540	16950	✓	✓	✓	-	✓
AR 100	.6	195	7.68	25 - 300	0.98 - 11.81	10600	23830	✓	✓	✓	-	✓

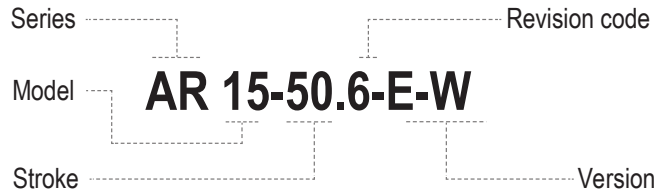
✓ Built-in as standard

✓ Optional upon request

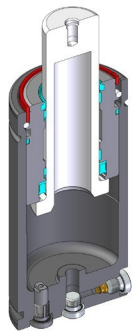
Model	Force color code	P		F0	
		bar	psi	± 5% @ +20°C / +68°F daN	lb
AR 2	50 (Green)	45	653	50	112
	100 (Blue)	90	1305	100	225
	150 (Red)	135	1958	150	337
	200 (Yellow)	180	2610	200	450
	0 (Black)	20-180	290-2610	22-200	49-405



HOW TO ORDER



Available versions

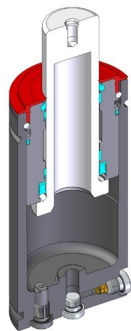


AR 15-5.6

Standard code



Self contained



AR 15-5.6-W

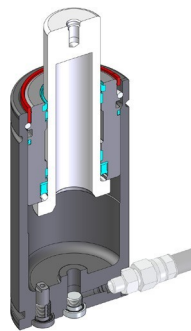
Add "-W" to standard code



Self contained



Secondary wiper

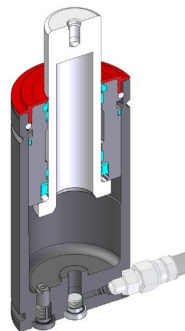


AR 15-5.6-C

Add "-C" to standard code



Linkable



AR 15-5.6 -C-W

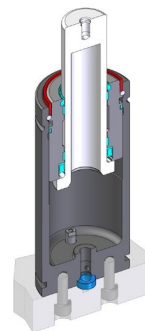
Add "-C-W" to standard code



Linkable



Secondary wiper

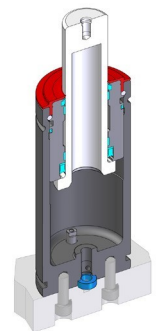


AR 15-5.6-E

Add "-E" to standard code



Easy Manifold



AR 15-5.6 -E-W

Add "-E-W" to standard code



Easy Manifold



Secondary wiper