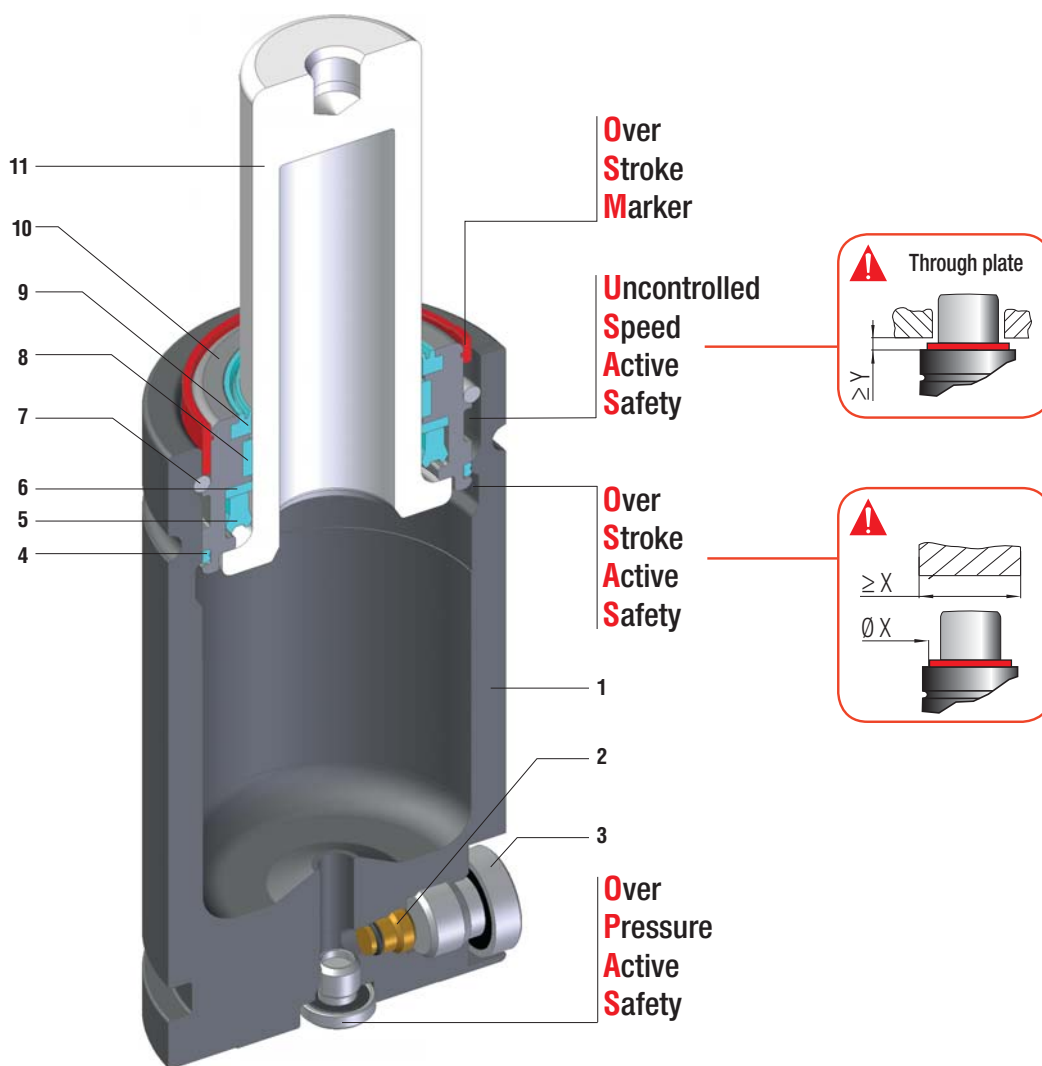


MB	Renault	Suzuki



Forze ISO, altezza ridotta - ISO forces, reduced height - ISO Kräfte, Reduzierte Höhe
 Forces ISO, Hauteur réduite - ISO fuerzas, altura reducida - Forças ISO, altura reduzida

SEALING	ROD SEAL
DESIGN	BUSH - BODY DESIGN

1	Body	5	Rod seal	9	Rod wiper
2	Valve	6	Back-up ring	10	Bush
3	Plug	7	Retaining ring	11	Rod (nitrited superfinished)
4	Dual ring seal	8	Guide ring		

RANGE CHART

Model	Body Ø		Stroke Cu		Initial force F0		OSAS	USAS	OPAS	SKUDO
	mm	inch	mm	inch	daN	lb				
S 500	45	1.77	6 - 125	0.24 - 4.92	470	1057	-	-	-	-
S 750	50	1.97	6 - 125	0.24 - 4.92	740	1664	✓	✓	✓	-
S 1500	75	2.95	25 - 100	0.98 - 3.94	1530	3440	-	-	✓	-
S 3000	95	3.74	25 - 100	0.98 - 3.94	2945	6621	-	-	✓	-

HOW TO ORDER



S 1500-050-A - N - E

- IT** Codice cilindro autonomo
- EN** Self-contained cylinder code
- DE** Kode des eingeständigen Gdf.
- FR** Code du cylindre autonome
- ES** Código del cilindro autónomo
- PT** Código do cilindro autónomo

- IT** Collegabile con tubi, cilindro fornito scarico e senza valvola unidirezionale
- EN** Linkable with hoses, cylinder supplied without pressure and oneway valve
- DE** Anschlussfähig mit Leitungen, Gdf. geliefert ohne Druck und RückschlagVentil
- FR** Connectable avec tubes, ressort fourni sans pression ni valve unidirectionelle
- ES** Connectable con tubos, cilindro suministrado sin presión y sin válvula unidireccional
- PT** Acompláveis com tubos, cilindro fornecidos sem pressão e sem válvula unidireccional

- IT** Collegabile EASY MANIFOLD, fornito scarico + guarnizione di collegamento
- EN** Linkable EASY MANIFOLD, supplied without pressure + connecting seal
- DE** Anschlussfähig EASY MANIFOLD, geliefert ohne Druck + Verbindungsdichtung
- FR** Connectable EASY MANIFOLD, fourni sans pression + joint de connexion
- ES** Connectable EASY MANIFOLD, suministrado sin presión + junta de conexión
- PT** Acompláveis EASY MANIFOLD, fornecidos sem pressão + vedantes de conexão

ACTIVE SAFETY

* $F_{1i} =$

Isothermal end force at 100% Cu

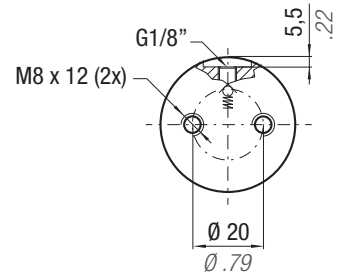
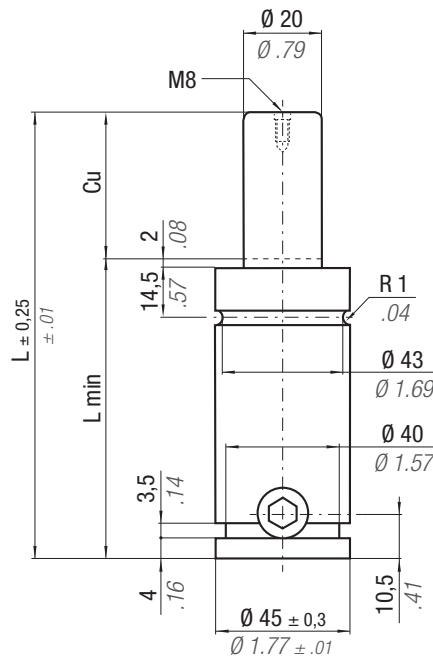


p. 16

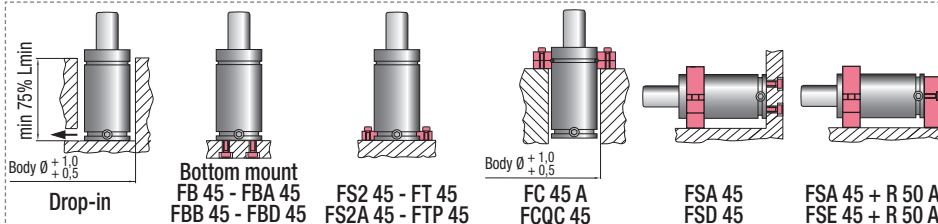


** $F_{1p} =$

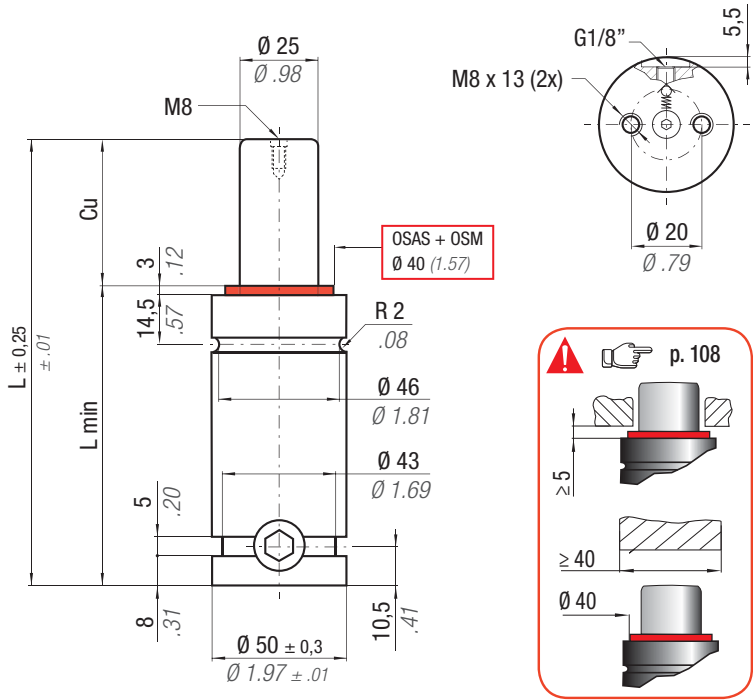
Polytropic end force at 100% Cu



CODE	Cu		L		L min		F ₀		F _{1i} *		F _{1p} **		V ₀		Maintenance kit		
	mm	inch	mm	inch	mm	inch	daN	lb	daN	lb	daN	lb	cm ³	in ³	~Kg	~lb	
S 500 - 006 - A	6	0.24	62	2.44	56	2.20	470 ± 5% 150 bar 2175 psi + 20 °C +68 °F	1057	579	1301	648	1457	12,0	0.73	0,54	1.19	✓
S 500 - 013 - A	13	0.51	76	2.99	63	2.48			622	1399	714	1604	20,0	1.22	0,58	1.28	✓
S 500 - 019 - A	19	0.75	88	3.46	69	2.72			645	1451	749	1683	26,0	1.59	0,62	1.37	✓
S 500 - 025 - A	25	0.98	100	3.94	75	2.95			660	1485	772	1736	32,0	1.95	0,67	1.48	✓
S 500 - 038 - A	38	1.50	126	4.96	88	3.46			680	1528	802	1804	45,0	2.75	0,77	1.70	✓
S 500 - 050 - A	50	1.97	150	5.91	100	3.94			690	1552	819	1840	57,0	3.48	0,85	1.87	✓
S 500 - 063 - A	63	2.48	176	6.93	113	4.45			669	1505	786	1767	78,0	4.76	0,90	1.98	✓
S 500 - 080 - A	80	3.15	210	8.27	130	5.12			678	1524	799	1797	96,0	5.86	1,01	2.23	✓
S 500 - 100 - A	100	3.94	250	9.84	150	5.91			687	1544	813	1828	116,0	7.08	1,16	2.56	✓
S 500 - 125 - A	125	4.92	300	11.81	175	6.89			694	1561	825	1855	141,0	8.60	1,35	2.98	✓

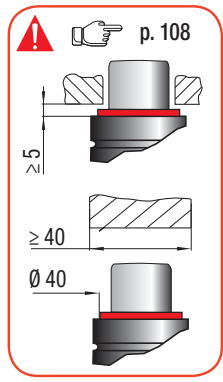


HOW TO ORDER
 (10 pcs) S 500-050-A
 (10 pcs) S 500-050-A-N



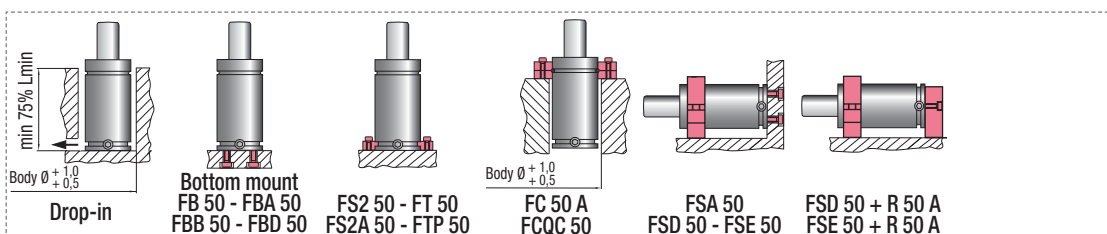
OSAS + OSM = OVER STROKE ACTIVE SAFETY + OVER STROKE MARKER

* F_{1i} = Isothermal end force at 100% Cu p. 16
 ** F_{1p} = Polytropic end force at 100% Cu



	$^{\circ}\text{F}$ 32 - 176	$^{\circ}\text{C}$ 0 - 80	ΔP $\pm 0,33\% / ^{\circ}\text{C}$	P max 150 bar 2175 psi	P min 20 bar 290 psi	S 4,91 cm ² 0,761 in ²	SPM ~ 30 - 80 (at 20°C)	Max Speed 1,8 m/s	Maintenance kit 39BMS00750B
--	--------------------------------------	------------------------------------	---	-------------------------------------	-----------------------------------	---	--------------------------------------	-----------------------------	---------------------------------------

CODE PHASING OUT from 01/2018	NEW	Cu		L		L min		F0 Initial force		F _{1i} * End force		F _{1p} ** End force		V0		PED 2014/68/EU	
		mm	inch	mm	inch	mm	inch	daN	lb	daN	lb	daN	lb	cm ³	in ³	~Kg	~lb
S 750 - 006 - A	S 750 - 006 - B	6	0.24	62	2.44	56	2.20	740 1664 ± 5% 150 bar 2175 psi + 20 °C +68 °F	909	2044	1019	2291	18,0	1.10	0,60	1.32	✓
S 750 - 013 - A	S 750 - 013 - B	13	0.51	76	2.99	63	2.48		995	2237	1149	2583	29,0	1.77	0,66	1.46	✓
S 750 - 019 - A	S 750 - 019 - B	19	0.75	88	3.46	69	2.72		1035	2327	1212	2725	38,0	2.32	0,71	1.57	✓
S 750 - 025 - A	S 750 - 025 - B	25	0.98	100	3.94	75	2.95		1062	2387	1253	2817	46,0	2.81	0,75	1.65	✓
S 750 - 038 - A	S 750 - 038 - B	38	1.50	126	4.96	88	3.46		1096	2464	1307	2938	66,0	4.03	0,85	1.87	✓
S 750 - 050 - A	S 750 - 050 - B	50	1.97	150	5.91	100	3.94		1114	2504	1336	3003	84,0	5.12	0,95	2.09	✓
S 750 - 063 - A	S 750 - 063 - B	63	2.48	176	6.93	113	4.45		1128	2536	1357	3051	103,0	6.28	1,05	2.31	✓
S 750 - 080 - A	S 750 - 080 - B	80	3.15	210	8.27	130	5.12		1139	2561	1375	3091	128,0	7.81	1,18	2.60	✓
S 750 - 100 - A	S 750 - 100 - B	100	3.94	250	9.84	150	5.91		1148	2581	1390	3125	158,0	9.64	1,33	2.93	✓
S 750 - 125 - A	S 750 - 125 - B	125	4.92	300	11.81	175	6.89		1155	2597	1401	3150	195,0	11.90	1,52	3.35	✓



HOW TO ORDER
 (10 pcs) S 750-050-B
 (10 pcs) S 750-050-B-N



p. 211

ACTIVE SAFETY

* $F_{1i} =$

Isothermal end force at 100% Cu

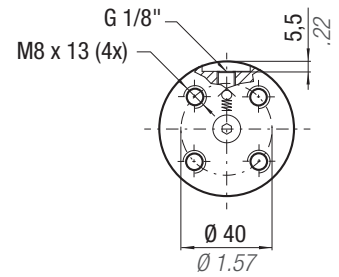
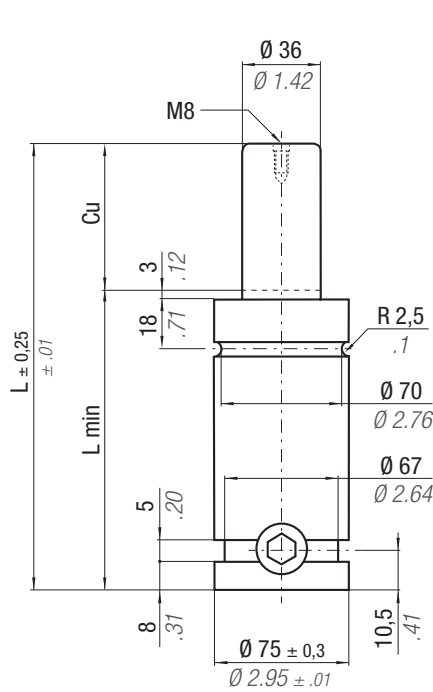
p. 16

** $F_{1p} =$

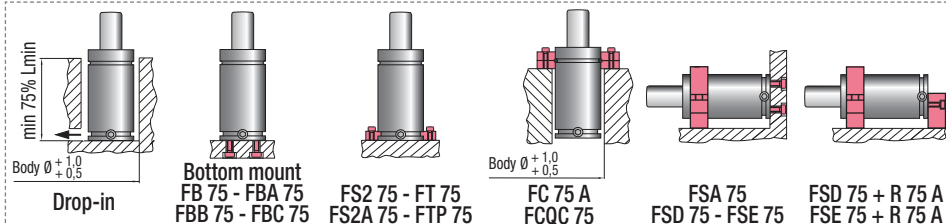
Polytropic end force at 100% Cu



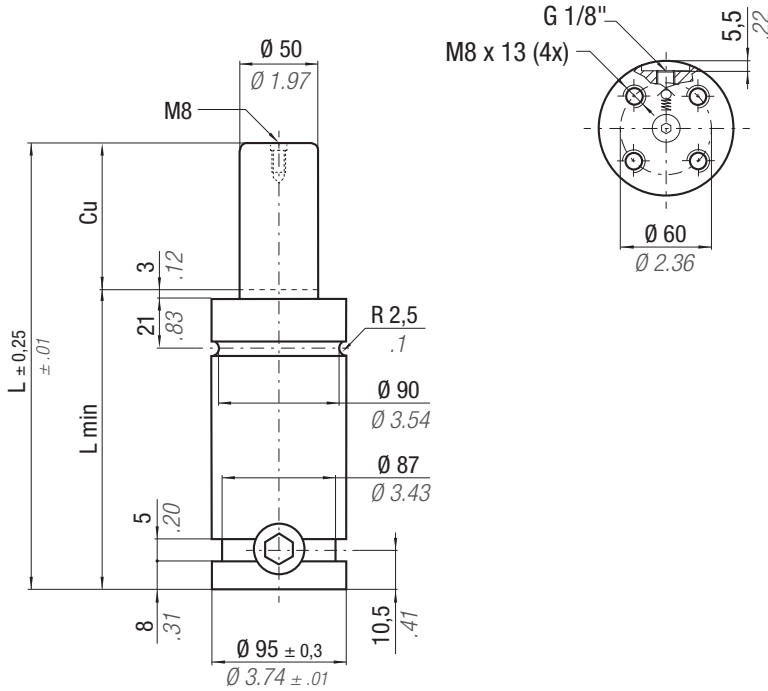
OPAS



CODE		°F 32 - 176	°C 0 - 80	ΔP ± 0,33 %/°C	P max 150 bar 2175 psi	P min 20 bar 290 psi	S 10,18 cm ² 1.578 in ²	SPM ~ 20 - 80 (at 20°C)	Max Speed 1,8 m/s	Maintenance kit 39BMS01500A	Cu		L		L min		F ₀ Initial force		F _{1i} * End force *		F _{1p} ** End force **		V ₀		PED 2014/68/EU		
											mm	inch	mm	inch	mm	inch	daN	lb	daN	lb	daN	lb	cm ³	in ³	~Kg	~lb	✓
S 1500 - 025 - A											25	0.98	110	4.33	85	3.35	1530	3440	2235	5026	2651	5960	93,0	5.67	2,25	4.96	✓
S 1500 - 038 - A											38	1.50	136	5.35	98	3.86	± 5%		2328	5234	2798	6290	130,0	7.93	2,53	5.58	✓
S 1500 - 050 - A											50	1.97	160	6.30	110	4.33	150 bar 2175 psi		2380	5349	2880	6476	164,0	10.00	2,78	6.13	✓
S 1500 - 063 - A											63	2.48	186	7.32	123	4.84			2417	5433	2941	6611	200,0	12.20	3,06	6.75	✓
S 1500 - 080 - A											80	3.15	220	8.66	140	5.51			2450	5508	2994	6731	248,0	15.13	3,42	7.54	✓
S 1500 - 100 - A											100	3.94	260	10.24	160	6.30	+ 20 °C +68 °F		2476	5566	3036	6826	305,0	18.61	3,84	8.47	✓



HOW TO ORDER
 (10 pcs) S 1500-050-A
 (10 pcs) S 1500-050-A-N



easu MANIFOLD p. 211

* $F_{1i} =$

Isothermal end force at 100% Cu p. 16

** $F_{1p} =$

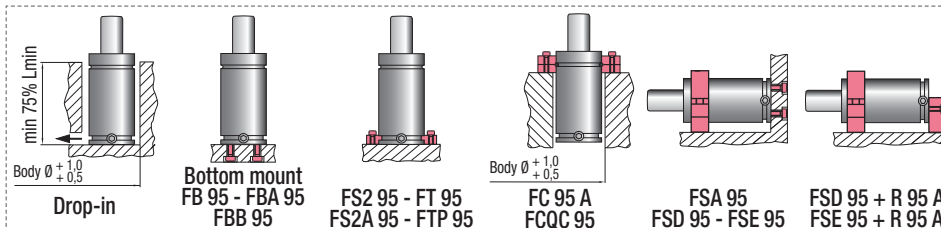
Polytropic end force at 100% Cu

ACTIVE SAFETY



	$^{\circ}F$ 32 - 176	$^{\circ}C$ 0 - 80	ΔP $\pm 0,33 \%/^{\circ}C$	P max 150 bar 2175 psi	P min 20 bar 290 psi	S 19,63 cm ² 3,043 in ²	SPM ~ 15 - 60 (at 20°C)	Max Speed 1,8 m/s	Maintenance kit 39BMS03000A
--	-------------------------------	-----------------------------	---------------------------------------	-------------------------------------	-----------------------------------	--	--------------------------------------	-----------------------------	---------------------------------------

CODE	Cu		L		L min		F ₀		F _{1i} *		F _{1p} **		V ₀		~Kg ~lb		PED 2014/68/EU
	mm	inch	mm	inch	mm	inch	daN	lb	daN	lb	daN	lb	cm ³	in ³			
S 3000 - 025 - A	25	0.98	120	4.72	95	3.74	2945	6621	4860	10927	5995	13477	143,0	8.72	4,13	9.11	✓
S 3000 - 038 - A	38	1.50	146	5.75	108	4.25	$\pm 5\%$		5101	11467	6391	14368	202,0	12.32	4,61	10.16	✓
S 3000 - 050 - A	50	1.97	170	6.69	120	4.72	150 bar 2175 psi		5233	11764	6612	14865	256,0	15.62	5,04	11.11	✓
S 3000 - 063 - A	63	2.48	196	7.72	133	5.24			5328	11979	6773	15227	315,0	19.22	5,51	12.15	✓
S 3000 - 080 - A	80	3.15	230	9.06	150	5.91			5413	12168	6916	15547	392,0	23.91	6,13	13.51	✓
S 3000 - 100 - A	100	3.94	270	10.63	170	6.69	+ 20 °C +68 °F		5479	12317	7028	15800	483,0	29.46	6,86	15.12	✓



HOW TO ORDER

(10 pcs) S 3000-050-A
(10 pcs) S 3000-050-A-N