

Massima forza, tenuta pistone + SKUDO - Maximum force, piston sealed + SKUDO - Maximale Kraft, Kolbendichtung + SKUDO - Force maximale, piston étanche + SKUDO - Máxima fuerza, estanqueidad pistón + SKUDO - Força máxima, estanquidade no pistão + SKUDO

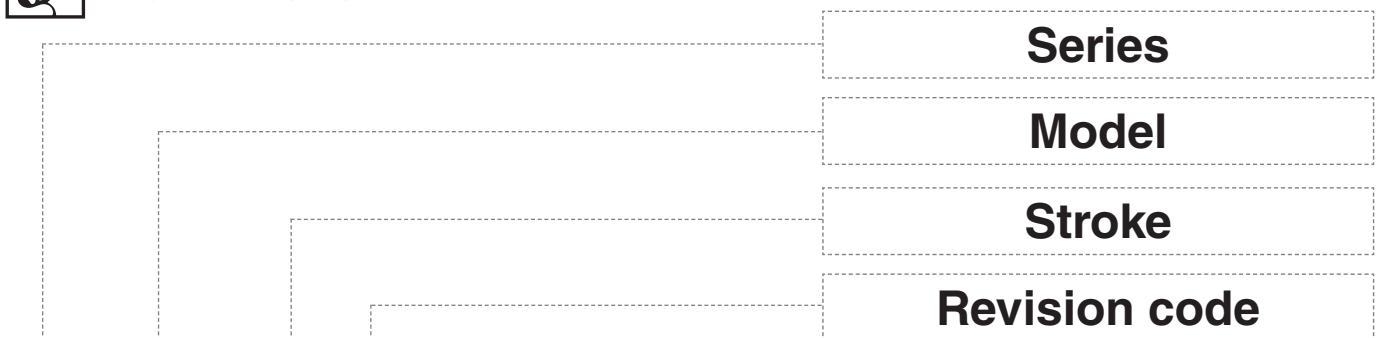
SEALING	PISTON SEAL
DESIGN	PISTON - BODY DESIGN

1	Plug	5	Back-up ring	9	Outer seal
2	Valve	6	Bush	10	Rod wiper
3	Body	7	Guide ring	11	Rod (nitrited superfinished)
4	Piston seal	8	Retaining ring		

RANGE CHART

Model	Body Ø		Stroke Cu		Initial force F0					
	mm	inch	mm	inch	daN	lb				
KE 400	25	0.98	6 - 50	0.39 - 1.97	425	955	-	-	-	✓
KE 750	32	1.26	6 - 50	0.39 - 1.97	740	1664	✓	✓	✓	✓
KE 1000	38	1.50	6 - 50	0.24 - 1.97	1060	2383	✓	✓	✓	✓
KE 1800	50	1.97	6 - 65	0.24 - 1.97	1885	4238	✓	✓	✓	✓
KE 3000	63	2.48	10 - 65	0.39 - 1.97	2945	6620	✓	✓	✓	✓
KE 4700	75	2.95	10 - 65	0.39 - 1.97	4675	10510	✓	✓	✓	✓
KE 7500	95	3.74	10 - 65	0.39 - 1.97	7540	16950	✓	✓	✓	✓
KE 12000	120	4.72	10 - 65	0.39 - 1.97	11780	26481	✓	✓	✓	✓
KE 18500	150	5.91	10 - 65	0.39 - 1.97	18410	41386	✓	✓	✓	✓

HOW TO ORDER



KE 1800-050-B - N - ED

- IT** Codice cilindro autonomo
- EN** Self-contained cylinder code
- DE** Kode des eingeständigen Gdf.
- FR** Code du cylindre autonome
- ES** Código del cilindro autónomo
- PT** Código do cilindro autónomo

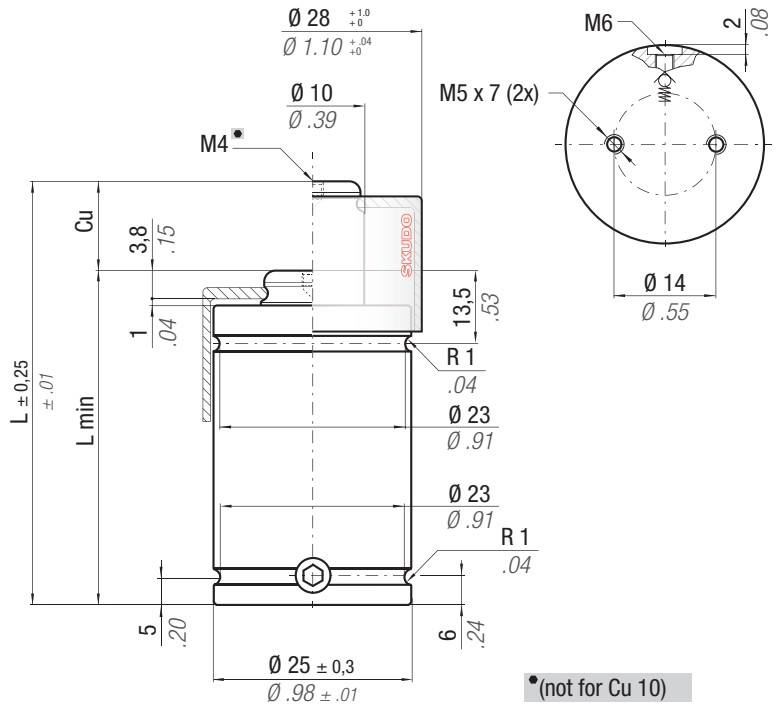
- IT** Collegabile con tubi, cilindro fornito scarico e senza valvola unidirezionale
- EN** Linkable with hoses, cylinder supplied without pressure and oneway valve
- DE** Anschlussfähig mit Leitungen, Gdf. geliefert ohne Druck und RückschlagVentil
- FR** Connectable avec tubes, ressort fourni sans pression ni valve unidirectionelle
- ES** Connectable con tubos, cilindro suministrado sin presión y sin válvula unidireccional
- PT** Acompláveis com tubos, cilindro fornecidos sem pressão e sem válvula unidireccional

- IT** Collegabile EASY MANIFOLD, fornito scarico + guarnizione di collegamento
- EN** Linkable EASY MANIFOLD, supplied without pressure + connecting seal
- DE** Anschlussfähig EASY MANIFOLD, geliefert ohne Druck + Verbindungsdichtung
- FR** Connectable EASY MANIFOLD, fourni sans pression + joint de connexion
- ES** Connectable EASY MANIFOLD, suministrado sin presión + junta de conexión
- PT** Acompláveis EASY MANIFOLD, fornecidos sem pressão + vedantes de conexão

ACTIVE SAFETY



* $F_{1i} =$ Isothermal end force at 100% Cu p. 16 **** $F_{1p} =$ Polytrophic end force at 100% Cu**



* (not for Cu 10)

CODE	Cu	L	L min	F ₀ Initial force	F _{1i} *		F _{1p} **		V ₀		Maintenance kit				
					daN	lb	daN	lb	daN	lb	cm ³	in ³	~Kg	~lb	
KE 400 - 006 - A	6	0.24	56	2.2	50	1.97	789	1774	1011	2273	4,0	0.24	0,13	0.29	✓
KE 400 - 010 - A	10	0.39	70	2.76	60	2.36	871	1958	1153	2592	6,0	0.37	0,16	0.35	✓
KE 400 - 016 - A	16	0.63	91	3.58	75	2.95	881	1981	1171	2633	10,0	0.61	0,18	0.40	✓
KE 400 - 025 - A	25	0.98	120	4.72	95	3.74	876	1969	1162	2612	16,0	0.98	0,23	0.51	✓
KE 400 - 032 - A	32	1.26	140	5.51	108	4.25	907	2040	1217	2736	19,0	1.16	0,24	0.53	✓
KE 400 - 040 - A	40	1.57	165	6.50	125	4.92	907	2039	1217	2736	24,0	1.46	0,28	0.62	✓
KE 400 - 050 - A	50	1.97	195	7.68	145	5.71	919	2065	1238	2783	30,0	1.83	0,31	0.68	✓

WARNING REMOVE SKUDO

Upside down mounting

FC / FCC fixings

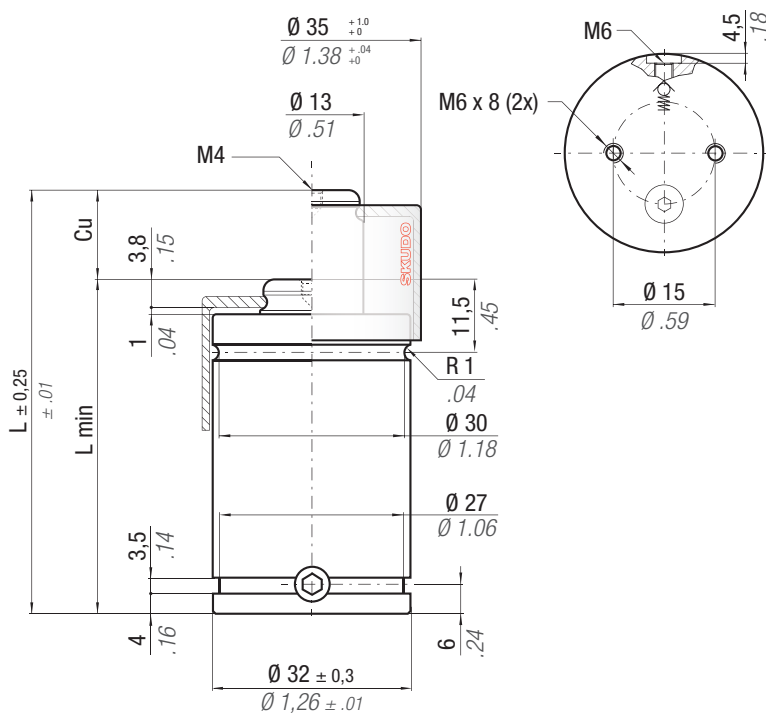
Drop-In

Bottom mount

FC 25 B
FCC 25 A

HOW TO ORDER

(10 pcs) KE 400-050-A
(10 pcs) KE 400-050-A-N



Il nuovo codice sarà fornito solo ad esaurimento del vecchio

The new code will be supplied only when the old will be out of stock

Der neue Kode wird geliefert nur wenn der alte nicht mehr im Lager ist

Le nouveau code sera fourni uniquement lorsque le vieux stock sera écoulé

El nuevo código será suministrado sólo cuando el viejo está fuera de stock

O novo código irá ser fornecido apenas quando o antigo esgotar stock

ACTIVE SAFETY



OSAS



USAS



OPAS



SKUDO

easu MANIFOLD p. 211

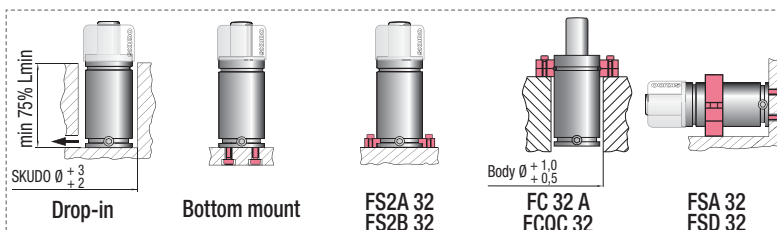
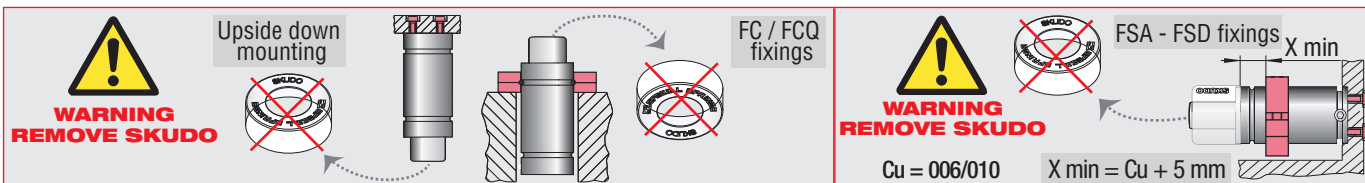
* $F_{1i} =$

Isothermal end force at 100% Cu p. 16

** $F_{1p} =$

Polytrophic end force at 100% Cu p. 16

N ₂		°F 32 - 176	°C 0 - 80	ΔP ± 0,33 %/°C	P max 150 bar 2175 psi	P min 20 bar 290 psi	S 4,91 cm ² 0.761 in ²	SPM ~ 50 - 100 (at 20°C)	Max Speed 0,8 m/s	Maintenance kit 39BMKE00750B
CODE	NEW	Cu	L	L min	F ₀	F _{1i} *	F _{1p} **	V ₀	PED 2014/68/EU	
PHASING OUT from 08/2012		mm inch	mm inch	mm inch	Initial force daN lb	End force * daN lb	End force ** daN lb	cm ³ in ³	~Kg ~lb	✓
KE 750 - 006 - A	KE 750 - 006 - B	6 0.24	63 2.48	57 2.24	740 1664	1207 2714	1486 3341	9,0 0.55	0,23 0.51	✓
KE 750 - 010 - A	KE 750 - 010 - B	10 0.39	75 2.95	65 2.56	± 5%	1310 2945	1656 3723	13,0 0.79	0,25 0.55	✓
KE 750 - 016 - A	KE 750 - 016 - B	16 0.63	93 3.66	77 3.03		1390 3125	1792 4029	19,0 1.16	0,29 0.64	✓
KE 750 - 025 - A	KE 750 - 025 - B	25 0.98	120 4.72	95 3.74	150 bar 2175psi	1450 3259	1895 4260	28,0 1.71	0,33 0.73	✓
KE 750 - 032 - A	KE 750 - 032 - B	32 1.26	140 5.51	108 4.25		1496 3363	1975 4440	35,0 2.14	0,37 0.82	✓
KE 750 - 040 - A	KE 750 - 040 - B	40 1.57	165 6.50	125 4.92		1496 3363	1975 4440	44,0 2.68	0,42 0.92	✓
KE 750 - 050 - A	KE 750 - 050 - B	50 1.97	195 7.68	145 5.71	+ 20 °C +68 °F	1513 3400	2004 4505	54,0 3.29	0,47 1.04	✓



HOW TO ORDER

(10 pcs) KE 750-050-B
(10 pcs) KE 750-050-B-N

ACTIVE SAFETY



OSAS



USAS



OPAS



SKUDO

Il nuovo codice sarà fornito solo ad esaurimento del vecchio

The new code will be supplied only when the old will be out of stock

Der neue Kode wird geliefert nur wenn der alte nicht mehr im Lager ist

Le nouveau code sera fourni uniquement lorsque le vieux stock sera écoulé

El nuevo código será suministrado sólo cuando el viejo está fuera de stock

O novo código irá ser fornecido apenas quando o antigo esgotar stock

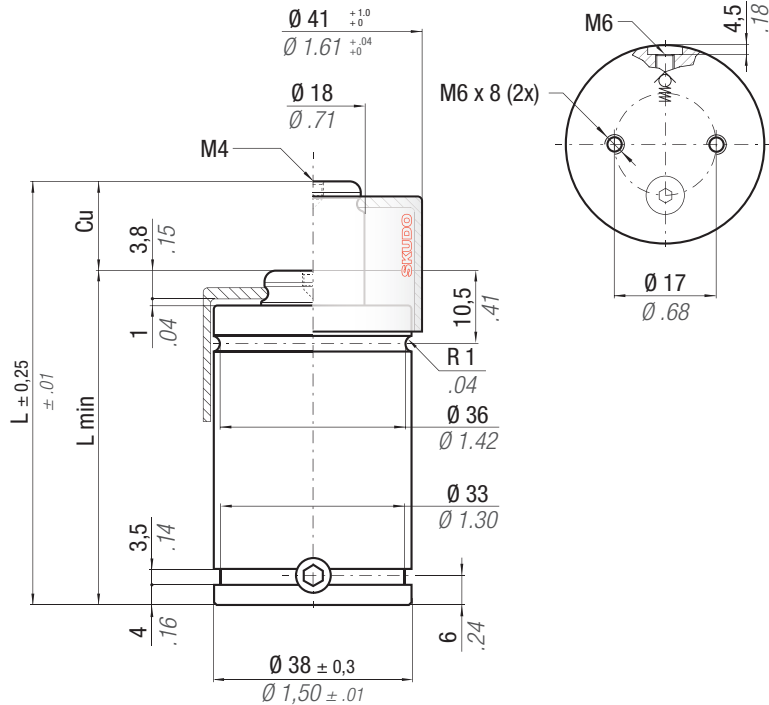
easu MANIFOLD p. 211

* $F_{1i} =$

Isothermal end force at 100% Cu p. 16

** $F_{1p} =$

Polytropic end force at 100% Cu



	$^{\circ}\text{F}$ 32 -176	$^{\circ}\text{C}$ 0 -80	ΔP ± 0,33 %/°C	P max 150 bar 2175 psi	P min 20 bar 290 psi	S 7,07 cm ² 1.096 in ²	SPM ~ 50 - 100 (at 20°C)	Max Speed 0,8 m/s	Maintenance kit 39BMKE01000B
--	----------------------------------	--------------------------------	---------------------------	-------------------------------------	-----------------------------------	-----------------------------------------------------------	---------------------------------------	-----------------------------	----------------------------------------

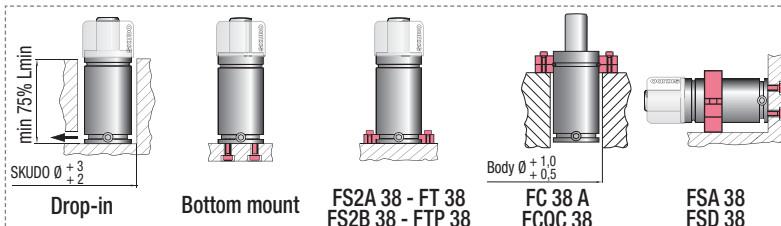
CODE PHASING OUT from 08/2012	NEW	Cu		L		L min		F ₀ Initial force		F _{1i} * End force *		F _{1p} ** End force **		V ₀		PED 2014/68/EU		
		mm	inch	mm	inch	mm	inch	daN	lb	daN	lb	daN	lb	cm ³	in ³		~Kg	~lb
KE 1000 - 006 - A	◆ KE 1000 - 006 - B	6	0.24	61	2.40	55	2.17	1060	2383	1902	4277	2412	5422	11,0	0.67	0,33	0.72	✓
KE 1000 - 010 - A	KE 1000 - 010 - B	10	0.39	78	3.07	68	2.68	± 5%		1834	4123	2297	5164	19,0	1.16	0,38	0.84	✓
KE 1000 - 016 - A	KE 1000 - 016 - B	16	0.63	100	3.94	84	3.31			1814	4078	2264	5090	31,0	1.89	0,44	0.97	✓
KE 1000 - 025 - A	KE 1000 - 025 - B	25	0.98	135	5.31	110	4.33	150 bar		1769	3977	2190	4923	51,0	3.11	0,53	1.17	✓
KE 1000 - 032 - A	KE 1000 - 032 - B	32	1.26	167	6.57	135	5.31	2175 psi		1701	3824	2079	4674	69,0	4.21	0,63	1.39	✓
KE 1000 - 040 - A	KE 1000 - 040 - B	40	1.57	195	7.68	155	6.10			1727	3883	2121	4768	84,0	5.12	0,70	1.54	✓
KE 1000 - 050 - A	KE 1000 - 050 - B	50	1.97	230	9.06	180	7.09	+ 20 °C +68 °F		1750	3934	2159	4854	103,0	6.28	0,79	1.74	✓

◆ Disposable

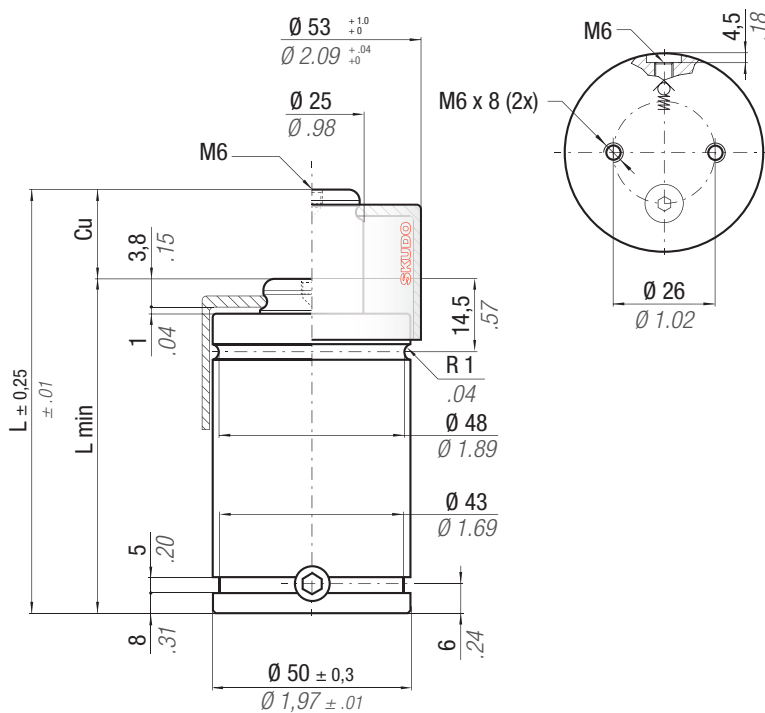
WARNING REMOVE SKUDO

WARNING REMOVE SKUDO

Cu = 006 / 010 X min = Cu + 5 mm



HOW TO ORDER
(10 pcs) KE 1000-050-B
(10 pcs) KE 1000-050-B-N



Il nuovo codice sarà fornito solo ad esaurimento del vecchio

The new code will be supplied only when the old will be out of stock

Der neue Kode wird geliefert nur wenn der alte nicht mehr im Lager ist

Le nouveau code sera fourni uniquement lorsque le vieux stock sera écoulé

El nuevo código será suministrado sólo cuando el viejo está fuera de stock

O novo código irá ser fornecido apenas quando o antigo esgotar stock

ACTIVE SAFETY



OSAS



USAS



OPAS



SKUDO

easu MANIFOLD p. 211

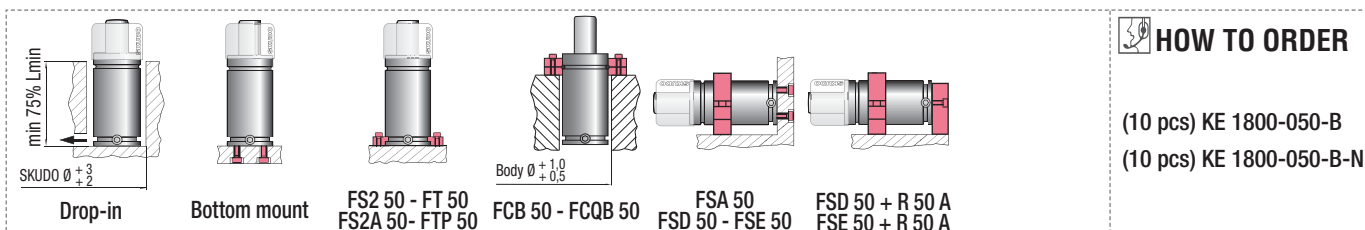
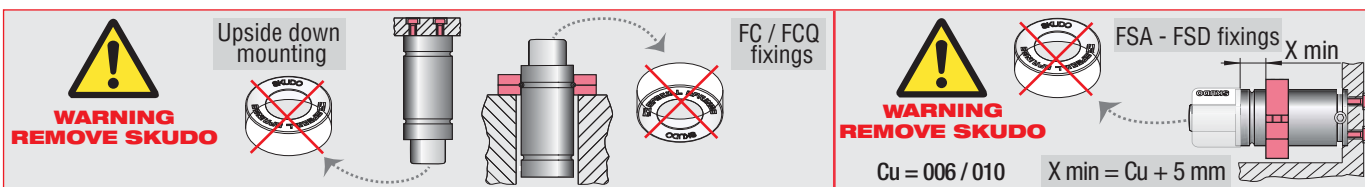
* $F_{1i} =$

Isothermal end force at 100% Cu p. 16

** $F_{1p} =$

Polytrophic end force at 100% Cu

		$^{\circ}F$ 32 - 176	$^{\circ}C$ 0 - 80	ΔP $\pm 0,33 \%/^{\circ}C$	P max 150 bar 2175 psi	P min 20 bar 290 psi	S 12,57 cm ² 1.948 in ²	SPM ~ 50 - 100 (at 20°C)	Max Speed 0,8 m/s	Maintenance kit 39BMKE01800B				
CODE	NEW	Cu	L	L min	F₀		F_{1i} *		F_{1p} **		V₀			
PHASING OUT from 08/2012		mm inch	mm inch	mm inch	daN lb	daN lb	daN lb	daN lb	daN lb	daN lb	cm ³ in ³	~Kg ~lb	~Kg ~lb	2014/68/EU
KE 1800 - 006 - A	KE 1800 - 006 - B	6 0.24	66 2.60	60 2.36	1885 4238 $\pm 5\%$	150 bar 2175psi	3046 6847	3731 8388	23,0 1.40	0,63 1.39	✓			
KE 1800 - 010 - A	KE 1800 - 010 - B	10 0.39	80 3.15	70 2.76			3125 7026	3860 8678	36,0 2.20	0,69 1.52	✓			
KE 1800 - 016 - A	KE 1800 - 016 - B	16 0.63	106 4.17	90 3.54	$+ 20^{\circ}C + 68^{\circ}F$		2979 6698	3623 8145	63,0 3.84	0,81 1.79	✓			
KE 1800 - 025 - A	KE 1800 - 025 - B	25 0.98	135 5.31	110 4.33			3133 7044	3874 8709	90,0 5.49	0,94 2.07	✓			
KE 1800 - 032 - A	KE 1800 - 032 - B	32 1.26	162 6.38	130 5.12			3106 6983	3830 8610	117,0 7.14	1,06 2.34	✓			
KE 1800 - 040 - A	KE 1800 - 040 - B	40 1.57	190 7.48	150 5.91			3135 7049	3877 8716	145,0 8.85	1,19 2.62	✓			
KE 1800 - 050 - A	KE 1800 - 050 - B	50 1.97	220 8.66	170 6.69			3236 7275	4043 9089	172,0 10.49	1,31 2.89	✓			
-	KE 1800 - 065 - B	65 2.56	271 10.67	206 8.11			3262 7333	4086 9186	221,0 13.48	1,53 3.37	✓			



Il nuovo codice sarà fornito solo ad esaurimento del vecchio

The new code will be supplied only when the old will be out of stock

Der neue Kode wird geliefert nur wenn der alte nicht mehr im Lager ist

Le nouveau code sera fourni uniquement lorsque le vieux stock sera écoulé

El nuevo código será suministrado sólo cuando el viejo está fuera de stock

O novo código irá ser fornecido apenas quando o antigo esgotar stock

ACTIVE SAFETY



OSAS



USAS



OPAS



SKUDO

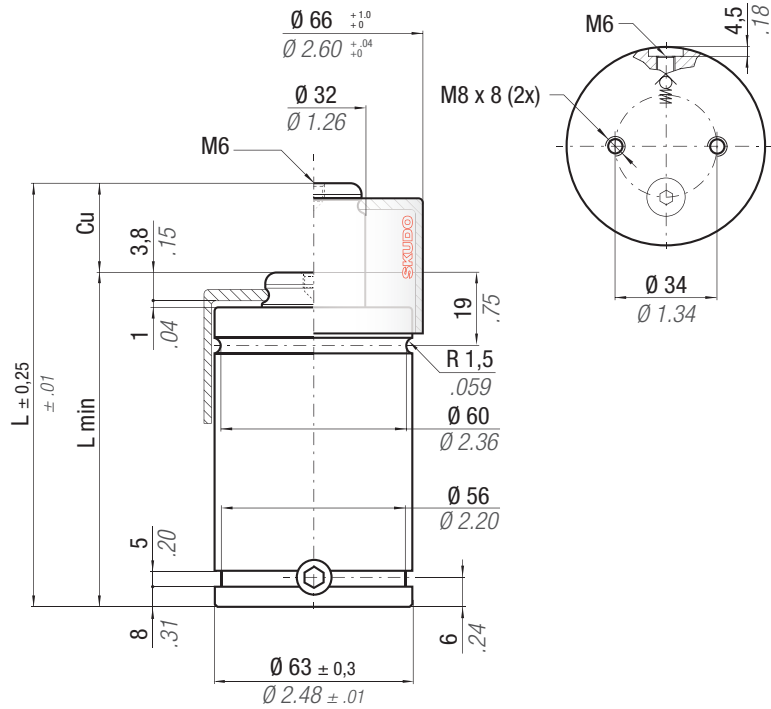
easu MANIFOLD p. 211

* $F_{1i} =$

Isothermal end force p. 16 at 100% Cu

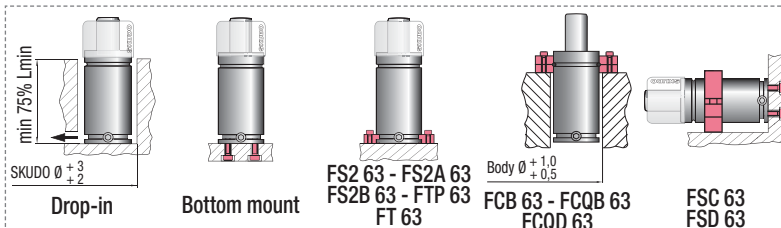
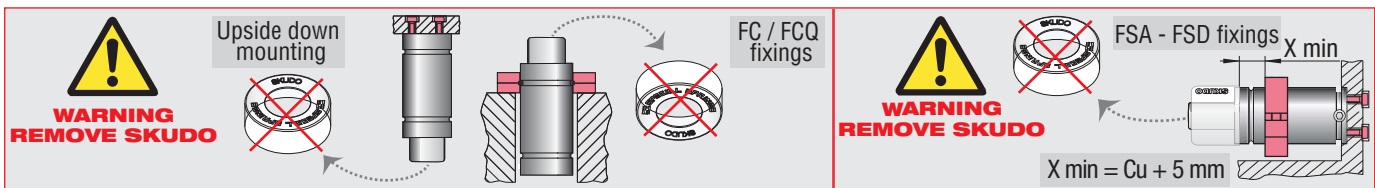
** $F_{1p} =$

Polytropic end force at 100% Cu



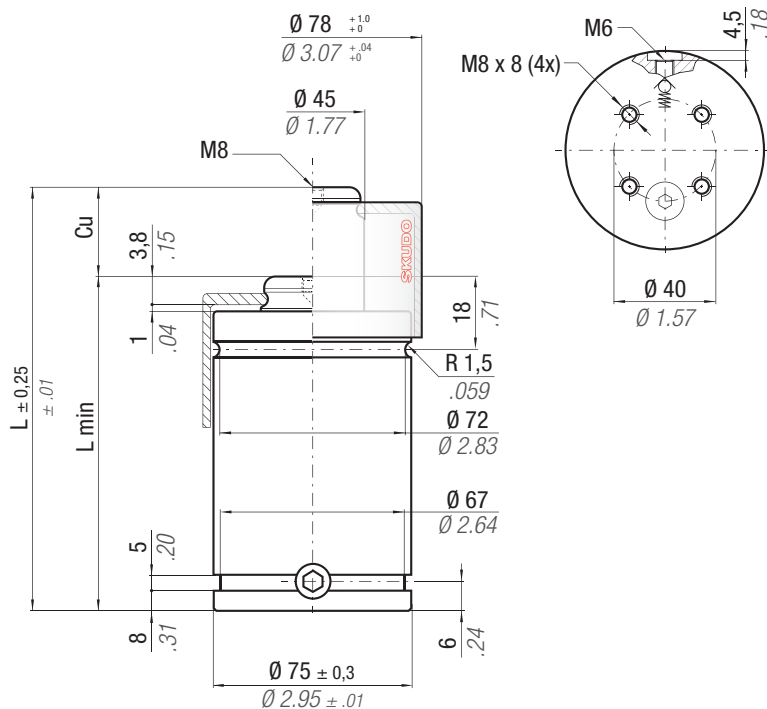
N₂	$^{\circ}\text{F}$ 32 - 176	$^{\circ}\text{C}$ 0 - 80	ΔP $\pm 0.33 \% / ^{\circ}\text{C}$	P max 150 bar 2175 psi	P min 20 bar 290 psi	S 19,63 cm ² 3.043 in ²	SPM ~ 80 - 100 (at 20°C)	Max Speed 0,8 m/s	Maintenance kit 39BMKE03000B
----------------------	--------------------------------------	------------------------------------	------------------------------------------------	-------------------------------------	-----------------------------------	------------------------------------------------------------	---------------------------------------	-----------------------------	----------------------------------------

CODE PHASING OUT from 08/2012	NEW	Cu		L		L min		F ₀ Initial force		F _{1i} * End force *		F _{1p} ** End force **		V ₀		~Kg	~lb	2014/68/EU
		mm	inch	mm	inch	mm	inch	daN	lb	daN	lb	daN	lb	cm ³	in ³			
KE 3000 - 010 - A	KE 3000 - 010 - B	10	0.39	85	3.35	75	2.95	2945 6620 $\pm 5\%$ 150 bar 2175 psi $+ 20^{\circ}\text{C} + 68^{\circ}\text{F}$	5084	11429	6363	14305	53,0	3.23	1,23	2.71	✓	
KE 3000 - 016 - A	KE 3000 - 016 - B	16	0.63	103	4.06	87	3.43		5362	12053	6829	15352	79,0	4.82	1,36	3.00	✓	
KE 3000 - 025 - A	KE 3000 - 025 - B	25	0.98	130	5.12	105	4.13		5566	12512	7176	16132	119,0	7.26	1,55	3.42	✓	
KE 3000 - 032 - A	KE 3000 - 032 - B	32	1.26	150	5.91	118	4.65		5721	12861	7443	16733	147,0	8.97	1,69	3.73	✓	
KE 3000 - 040 - A	KE 3000 - 040 - B	40	1.57	175	6.89	135	5.31		5722	12863	7445	16737	184,0	11.22	1,86	4.10	✓	
KE 3000 - 050 - A	KE 3000 - 050 - B	50	1.97	205	8.07	155	6.10	5778	12989	7542	16955	227,0	13.85	2,07	4.56	✓		
-	KE 3000 - 065 - B	65	2.56	256	10.08	191	7.52	5630	12657	7287	16382	304,0	18.54	2,44	5.38	✓		



HOW TO ORDER

(10 pcs) KE 3000-050-B
(10 pcs) KE 3000-050-B-N



Il nuovo codice sarà fornito solo ad esaurimento del vecchio

The new code will be supplied only when the old will be out of stock

Der neue Kode wird geliefert nur wenn der alte nicht mehr im Lager ist

Le nouveau code sera fourni uniquement lorsque le vieux stock sera écoulé

El nuevo código será suministrado sólo cuando el viejo está fuera de stock

O novo código irá ser fornecido apenas quando o antigo esgotar stock

ACTIVE SAFETY



OSAS



USAS



OPAS



SKUDO

easu MANIFOLD p. 211

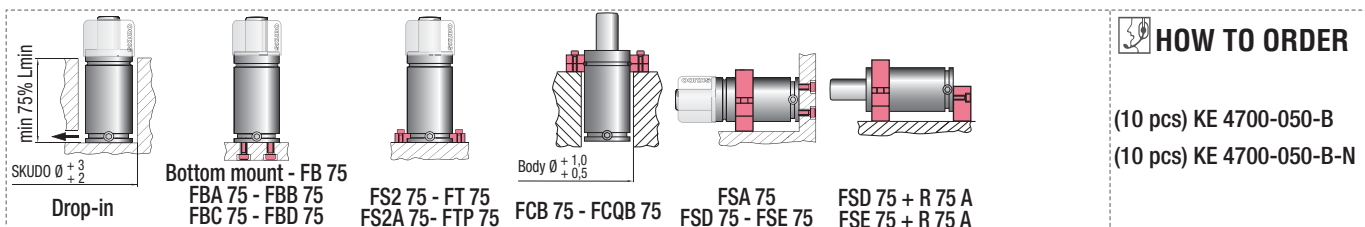
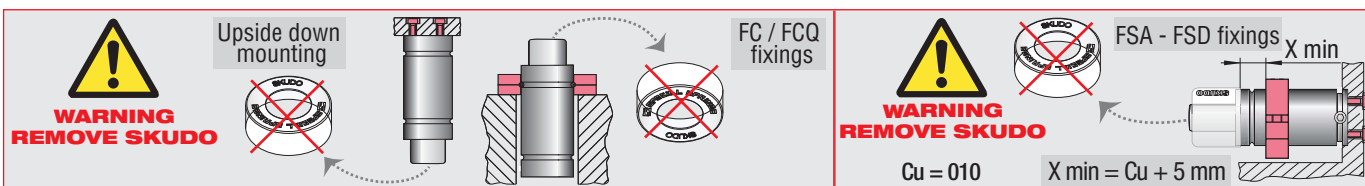
* $F_{1i} =$

Isothermal end force at 100% Cu p. 16

** $F_{1p} =$

Polytrophic end force at 100% Cu

N₂		°F 32 - 176	°C 0 - 80	ΔP ± 0,33 %/°C	P max 150 bar 2175 psi	P min 20 bar 290 psi	S 31,17 cm ² 4.831 in ²	SPM ~ 80 - 100 (at 20°C)	Max Speed 0,8 m/s	Maintenance kit 39BMKE04700B								
CODE	NEW	Cu		L		L min		F₀		F_{1i} *		F_{1p} **		V₀		PED		
PHASING OUT from 08/2012		mm	inch	mm	inch	mm	inch	daN	lb	daN	lb	daN	lb	cm ³	in ³	~Kg	~lb	2014/68/EU
KE 4700 - 010 - A	KE 4700 - 010 - B	10	0.39	80	3.15	70	2.76	4675	10510	8017	18023	10013	22510	86,0	5.25	1,62	3.57	✓
KE 4700 - 016 - A	KE 4700 - 016 - B	16	0.63	106	4.17	90	3.54			7467	16788	9112	20485	153,0	9.33	1,85	4.08	✓
KE 4700 - 025 - A	KE 4700 - 025 - B	25	0.98	135	5.31	110	4.33	150 bar 2175psi		7780	17491	9622	21631	224,0	13.66	2,10	4.63	✓
KE 4700 - 032 - A	KE 4700 - 032 - B	32	1.26	167	6.57	135	5.31			7447	16742	9079	20410	308,0	18.79	2,39	5.27	✓
KE 4700 - 040 - A	KE 4700 - 040 - B	40	1.57	200	7.87	160	6.30	+ 20 °C +68 °F		7360	16547	8939	20096	393,0	23.97	2,68	5.91	✓
KE 4700 - 050 - A	KE 4700 - 050 - B	50	1.97	240	9.45	190	7.48			7326	16469	8883	19970	496,0	30.26	3,03	6.68	✓
-	KE 4700 - 065 - B	65	2.56	273	10.75	208	8.19	7926	17818	9862	22171	565,0	34.47	3,30	7.28	✓		



ACTIVE SAFETY



OSAS



USAS



OPAS



SKUDO

Il nuovo codice sarà fornito solo ad esaurimento del vecchio

The new code will be supplied only when the old will be out of stock

Der neue Kode wird geliefert nur wenn der alte nicht mehr im Lager ist

Le nouveau code sera fourni uniquement lorsque le vieux stock sera écoulé

El nuevo código será suministrado sólo cuando el viejo está fuera de stock

O novo código irá ser fornecido apenas quando o antigo esgotar stock

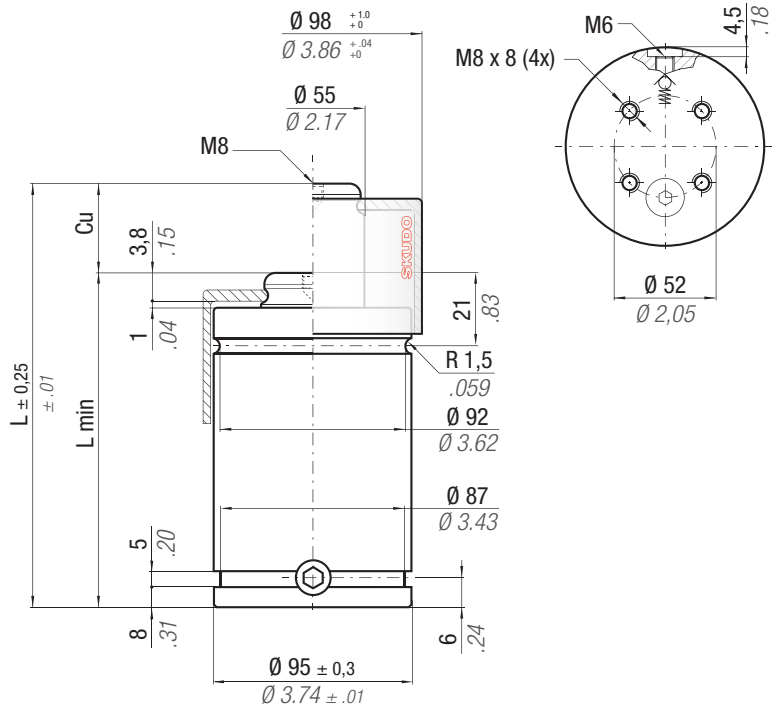
easu MANIFOLD p. 211

* $F_{1i} =$

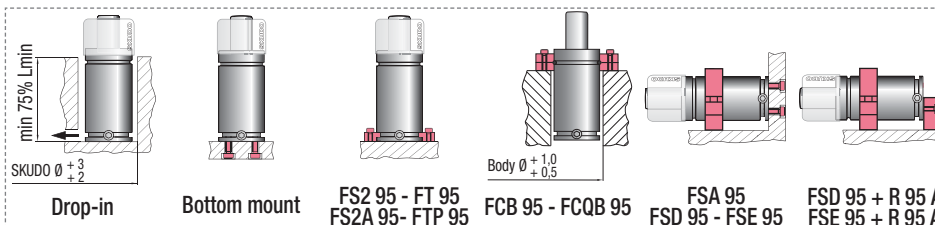
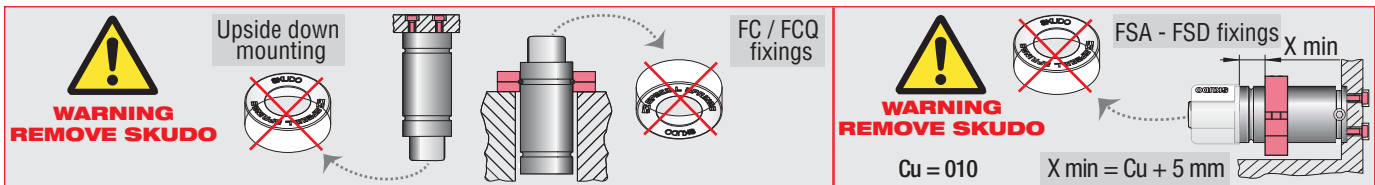
Isothermal end force at 100% Cu p. 16

** $F_{1p} =$

Polytrophic end force at 100% Cu

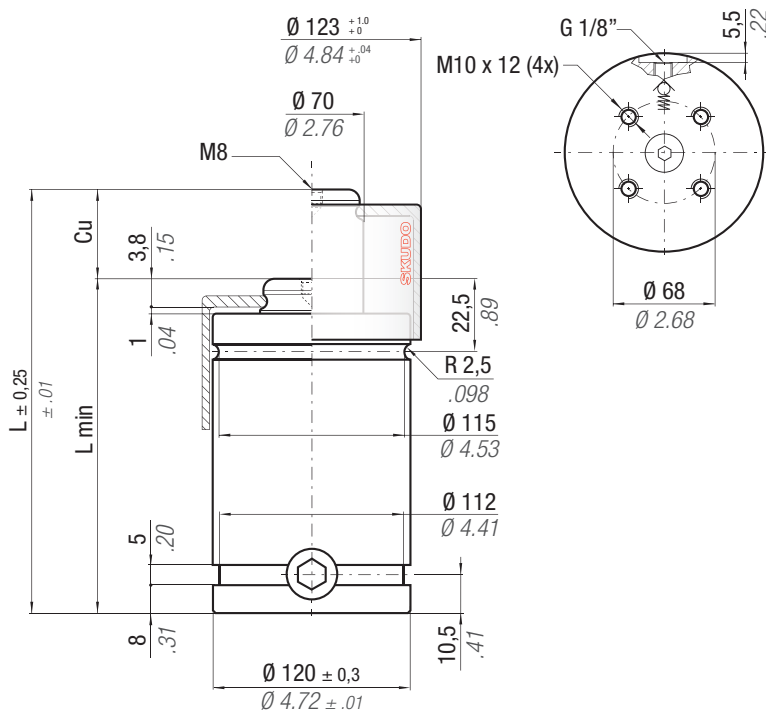


N ₂		$^{\circ}F$ 32 - 176	$^{\circ}C$ 0 - 80	ΔP $\pm 0,33 \%/^{\circ}C$	P max 150 bar 2175 psi	P min 20 bar 290 psi	S 50,27 cm ² 7.791 in ²	SPM ~ 80 - 100 (at 20°C)	Max Speed 0,8 m/s	Maintenance kit 39BMKE07500B
CODE	NEW	Cu	L	L min	F ₀	F _{1i} *	F _{1p} **	V ₀	PED 2014/68/EU	
PHASING OUT from 08/2012		mm inch	mm inch	mm inch	daN lb	daN lb	daN lb	cm ³ in ³	~Kg ~lb	✓
KE 7500 - 010 - A	KE 7500 - 010 - B	10 0.39	90 3.54	80 3.15	7540 16950 $\pm 5\%$	11910 26775	14481 32555	158,0 9.64	2,89 6.37	✓
KE 7500 - 016 - A	KE 7500 - 016 - B	16 0.63	116 4.57	100 3.94		11563 25995	13924 31302	266,0 16.23	3,26 7.19	✓
KE 7500 - 025 - A	KE 7500 - 025 - B	25 0.98	145 5.71	120 4.72	150 bar 2175psi	12169 27357	14901 33499	379,0 23.12	3,64 8.02	✓
KE 7500 - 032 - A	KE 7500 - 032 - B	32 1.26	182 7.17	150 5.91		11486 25821	13800 31024	540,0 32.94	4,18 9.22	✓
KE 7500 - 040 - A	KE 7500 - 040 - B	40 1.57	210 8.27	170 6.69	+ 20 °C +68 °F	11697 26297	14138 31783	652,0 39.77	4,56 10.05	✓
KE 7500 - 050 - A	KE 7500 - 050 - B	50 1.97	255 10.04	205 8.07		11502 25857	13825 31080	841,0 51.30	5,19 11.44	✓
-	KE 7500 - 065 - B	65 2.56	279 10.98	214 8.43		12826 28834	15978 35920	907,0 55.33	5,46 12.40	✓



HOW TO ORDER

(10 pcs) KE 7500-050-B
(10 pcs) KE 7500-050-B-N



Il nuovo codice sarà fornito solo ad esaurimento del vecchio

The new code will be supplied only when the old will be out of stock

Der neue Kode wird geliefert nur wenn der alte nicht mehr im Lager ist

Le nouveau code sera fourni uniquement lorsque le vieux stock sera écoulé

El nuevo código será suministrado sólo cuando el viejo está fuera de stock

O novo código irá ser fornecido apenas quando o antigo esgotar stock

ACTIVE SAFETY



OSAS



USAS



OPAS



SKUDO

easu MANIFOLD p. 211

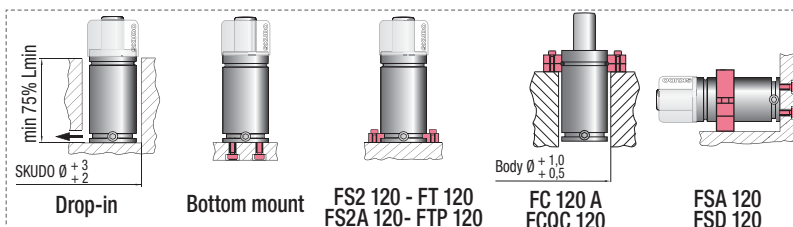
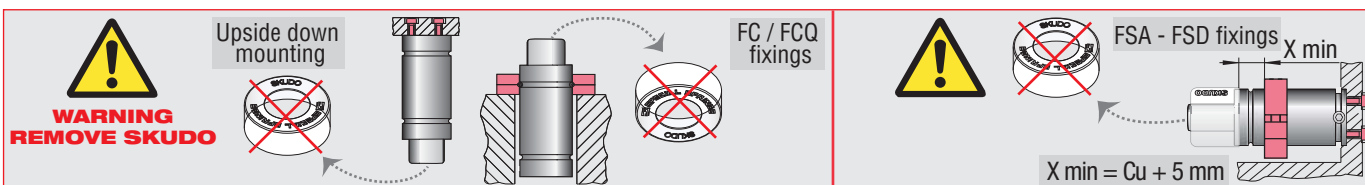
* $F_{1i} =$

Isothermal end force at 100% Cu p. 16

** $F_{1p} =$

Polytrophic end force at 100% Cu

		$^{\circ}F$ 32 - 176	$^{\circ}C$ 0 - 80	ΔP $\pm 0,33 \%/^{\circ}C$	P max 150 bar 2175 psi	P min 20 bar 290 psi	S 78,54 cm ² 12.174 in ²	SPM ~ 50 - 100 (at 20°C)	Max Speed 0,8 m/s	Maintenance kit 39BMKE12000B
CODE		$^{\circ}F$	$^{\circ}C$	ΔP	P max	P min	S	SPM	Max Speed	Maintenance kit
PHASING OUT from 08/2012	NEW									
CODE	Cu	L	L min	F ₀	F _{1i} *	F _{1p} **	V ₀			
	mm inch	mm inch	mm inch	daN lb	daN lb	daN lb	cm ³ in ³	~Kg ~lb	2014/68/EU	
KE 12000 - 010 - A	KE 12000 - 010 - B	10 0.39	100 3.94	90 3,54	11780 26482	17843 40113	21398 48105	267,0 16.29	5,49 12.10	✓
KE 12000 - 016 - A	KE 12000 - 016 - B	16 0.63	126 4.96	110 4,33	$\pm 5\%$	17646 39670	21084 47399	436,5 26.63	6,11 13.47	✓
KE 12000 - 025 - A	KE 12000 - 025 - B	25 0.98	155 6.10	130 5,12	150 bar	18657 41943	22704 51041	613,0 37.39	6,76 14.90	✓
KE 12000 - 032 - A	KE 12000 - 032 - B	32 1.26	187 7.36	155 6,10	2175psi	18166 40838	21913 49262	824,0 50.26	7,54 16.62	✓
KE 12000 - 040 - A	KE 12000 - 040 - B	40 1.57	220 8.66	180 7,09		18098 40687	21805 49020	1037,0 63.26	8,31 18.32	✓
KE 12000 - 050 - A	KE 12000 - 050 - B	50 1.97	260 10.24	210 8,27		18116 40727	21834 49085	1294,0 78.93	9,25 20.9	✓
-	KE 12000 - 065 - B	65 2.56	320 12.60	255 10,04	+ 20 °C +68 °F	18133 40765	21860 49143	1679,0 102.42	10,66 23.50	✓



HOW TO ORDER

(10 pcs) KE 12000-050-B
(10 pcs) KE 12000-050-B-N

ACTIVE SAFETY



OSAS



USAS



OPAS



SKUDO

Il nuovo codice sarà fornito solo ad esaurimento del vecchio

The new code will be supplied only when the old will be out of stock

Der neue Kode wird geliefert nur wenn der alte nicht mehr im Lager ist

Le nouveau code sera fourni uniquement lorsque le vieux stock sera écoulé

El nuevo código será suministrado sólo cuando el viejo está fuera de stock

O novo código irá ser fornecido apenas quando o antigo esgotar stock

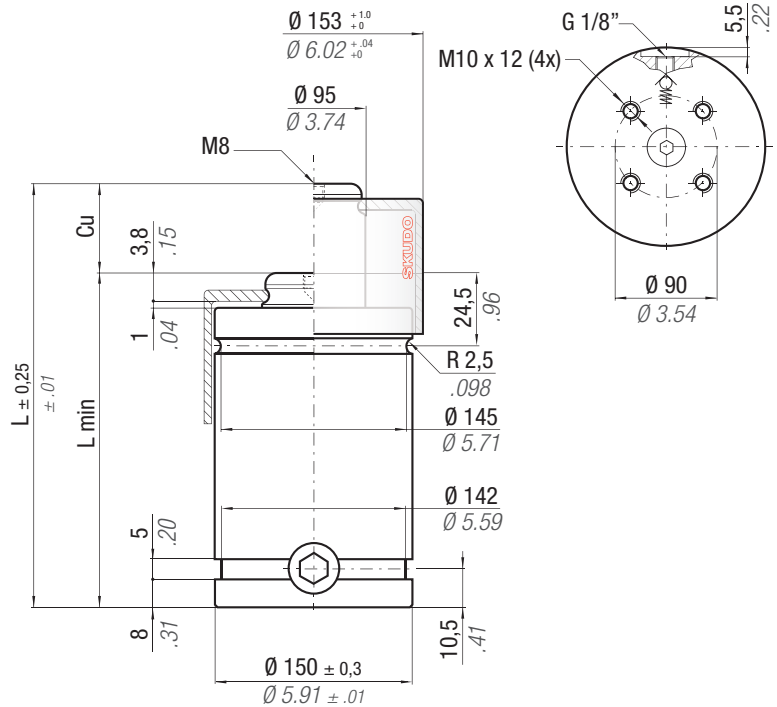
easu MANIFOLD p. 211

* $F_{1i} =$

Isothermal end force at 100% Cu p. 16

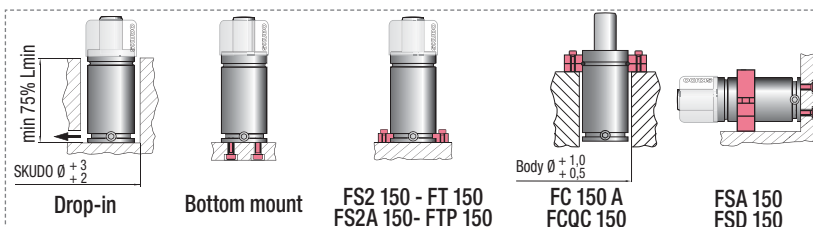
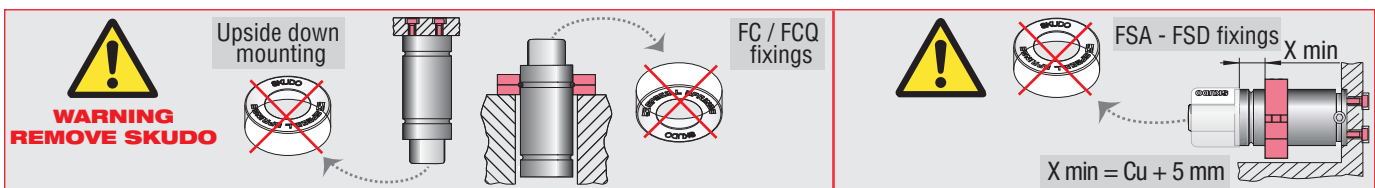
** $F_{1p} =$

Polytrophic end force at 100% Cu



	$^{\circ}\text{F}$ 32 -176	$^{\circ}\text{C}$ 0 -80	ΔP ± 0,33 %/°C	P max 150 bar 2175 psi	P min 20 bar 290 psi	S 122,72 cm ² 19.022 in ²	SPM ~ 50 - 100 (at 20°C)	Max Speed 0,8 m/s	Maintenance kit 39BMKE18500B
--	----------------------------------	--------------------------------	---------------------------------	-------------------------------------	-----------------------------------	--------------------------------------------------------------	---------------------------------------	-----------------------------	----------------------------------------

CODE PHASING OUT from 08/2012	NEW	Cu		L		L min		F ₀ Initial force		F _{1i} * End force *		F _{1p} ** End force **		V ₀		~Kg	~lb	 2014/68/EU
		mm	inch	mm	inch	mm	inch	daN	lb	daN	lb	daN	lb	cm ³	in ³			
KE 18500 - 010 - A	KE 18500 - 010 - B	10	0.39	110	4.33	100	3.94	18410	41386	25880	58181	30288	68090	493,0	30.07	9,31	20.53	✓
KE 18500 - 016 - A	KE 18500 - 016 - B	16	0.63	136	5.35	120	4.72			26201	58903	30788	69214	765,0	46.67	10,28	22.66	✓
KE 18500 - 025 - A	KE 18500 - 025 - B	25	0.98	165	6.50	140	5.51			27771	62431	33260	74771	1050,0	64.05	11,30	24.91	✓
KE 18500 - 032 - A	KE 18500 - 032 - B	32	1.26	197	7.76	165	6.50	150 bar	2175psi	27347	61479	32588	73261	1388,0	84.67	12,51	27.58	✓
KE 18500 - 040 - A	KE 18500 - 040 - B	40	1.57	235	9.25	195	7.68	+ 20 °C	+68 °F	26947	60580	31957	71842	1791,0	109.25	13,93	30.71	✓
KE 18500 - 050 - A	KE 18500 - 050 - B	50	1.97	270	10.63	220	8.66			27505	61833	32838	73823	2142,0	130.66	15,19	33.49	✓
-	KE 18500 - 065 - B	65	2.56	323	12.72	258	10.16			28055	63070	33713	75790	2674,0	163.11	17,10	37.70	✓



HOW TO ORDER

(10 pcs) KE 18500-050-B
(10 pcs) KE 18500-050-B-N