



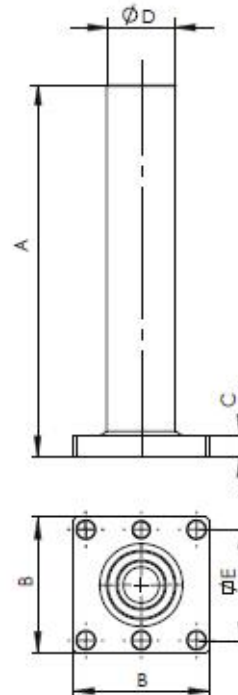
Anschluss Antriebseinheit / Turning Unit's Mounting

PURS32PAT25



Material: Aluminium 6082
Schrauben: enthalten

Material: Aluminium 6082
Bolts: Included



CODE	A	B	C	ØD	E	Peso/ Weight (Kg)	Bemerkungen / Note
PURS32-PAT25	212	49	12	25	40	0,25	Oberseite des Antriebs / on the turning unit's upper side

Anwendungsbeispiel / Application example

